

# QSFPDD-400G-FR4-CEO

400GBase QSFP-DD  
CWDM4  
2km Reach

+45 (0)32 72 66 76



info@nexgen.eu

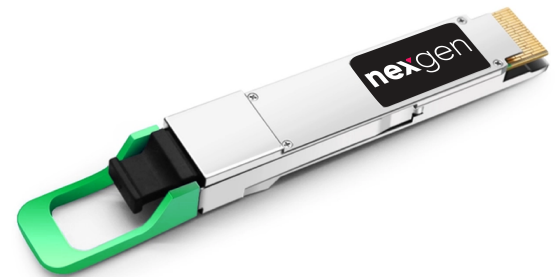


www.nexgen.eu



## Features

- QSFP DD MSA rev5.0 compliant with CMIS4.0 Management interface
- Compliant to 100G Lambda MSA
- Compliant to 802.3cu
- 400G FR4 specification compliant
- 4 CWDM lanes MUX/DEMUX design
- 8x 26.5625 GBd PAM4 electrical interface (400GAUI-8)
- Data Rate 106.25Gbps (PAM4) per channel
- Maximum power consumption : 8 W
- LC duplex connector
- Supports 425 Gbit /s aggregate bit rate
- Up to 2 km transmission on single mode fiber with FEC
- Single 3.3 V power supply
- RoHS 2 compliant



## Applications

- Data center interconnect

### Part number

QSFPDD-400G-FR4-CEO

### Product description

400GBase SMF QSFP-DD CWDM4 2km 0°C to 70°C LC Duplex DDM (8W)

# PIN Description

Pin		Function/Description	Notes
1	GND	Transmitter Ground (Common with Receiver Ground)	1
2	Tx2 -	Transmitter Inverted Data Input	
3	Tx2 +	Transmitter Non -Inverted Data output	
4	GND	Transmitter Ground (Common with Receiver Ground)	1
5	Tx4 -	Transmitter Inverted Data Input	
6	Tx4 +	Transmitter Non -Inverted Data output	
7	GND	Transmitter Ground (Common with Receiver Ground)	1
8	ModSelL	Module Select	
9	ResetL	Module Reset	
10	VccRx	3.3V Power Supply Receiver	2
11	SCL	2-Wire serial Interface Clock	
12	SDA	2-Wire serial Interface Data	
13	GND	Transmitter Ground (Common with Receiver Ground)	1
14	Rx3 +	Receiver Non -Inverted Data Output	
15	Rx3 -	Receiver Inverted Data Output	
16	GND	Transmitter Ground (Common with Receiver Ground)	1
17	Rx1 +	Receiver Non -Inverted Data Output	
18	Rx1 -	Receiver Inverted Data Output	
19	GND	Transmitter Ground (Common with Receiver Ground)	1
20	GND	Transmitter Ground (Common with Receiver Ground)	1
21	Rx2 -	Receiver Inverted Data Output	
22	Rx2 +	Receiver Non -Inverted Data Output	
23	GND	Transmitter Ground (Common with Receiver Ground)	1
24	Rx4 -	Receiver Inverted Data Output	
25	Rx4 +	Receiver Non -Inverted Data Output	
26	GND	Transmitter Ground (Common with Receiver Ground)	1
27	ModPrsl	Module Present	
28	IntL	Interrupt	
29	VccTx	3.3V power supply transmitter	2
30	Vcc1	3.3V power supply	2
31	LPMode	Low Power Mode	
32	GND	Transmitter Ground (Common with Receiver Ground)	1
33	Tx3 +	Transmitter Non -Inverted Data Input	
34	Tx3 -	Transmitter Inverted Data Output	
35	GND	Transmitter Ground (Common with Receiver Ground)	1
36	Tx1 +	Transmitter Non -Inverted Data Input	
37	Tx1 -	Transmitter Inverted Data Output	
38	GND	Transmitter Ground (Common with Receiver Ground)	1

Pin		Function/Description	Notes
39	GND	Transmitter Ground (Common with Receiver Ground)	1
40	Tx6 -	Transmitter Inverted Data Input	
41	Tx6 +	Transmitter Non -Inverted Data output	
42	GND	Transmitter Ground (Common with Receiver Ground)	1
43	Tx8 -	Transmitter Inverted Data Input	
44	Tx8 +	Transmitter Non -Inverted Data output	
45	GND	Transmitter Ground (Common with Receiver Ground)	1
46	Reserved	For future use	3
47	VS1	Module Vendor Specific	3
48	VccRx1	3.3V Power Supply Receiver	2
49	VS2	Module Vendor Specific 2	3
50	VS3	Module Vendor Specific 3	3
51	GND	Transmitter Ground (Common with Receiver Ground)	1
52	Rx7 +	Receiver Non -Inverted Data Output	
53	Rx7 -	Receiver Inverted Data Output	
54	GND	Transmitter Ground (Common with Receiver Ground)	1
55	Rx5 +	Receiver Non -Inverted Data Output	
56	Rx5 -	Receiver Inverted Data Output	
57	GND	Transmitter Ground (Common with Receiver Ground)	1
58	GND	Transmitter Ground (Common with Receiver Ground)	1
59	Rx6 -	Receiver Inverted Data Output	
60	Rx6 +	Receiver Non -Inverted Data Output	
61	GND	Transmitter Ground (Common with Receiver Ground)	1
62	Rx8 -	Receiver Inverted Data Output	
63	Rx8 +	Receiver Non -Inverted Data Output	
64	GND	Transmitter Ground (Common with Receiver Ground)	1
65	NC	No Connect	
66	Reserved	For future use	
67	VccTx1	3.3V power supply transmitter	2
68	Vcc2	3.3V power supply	2
69	Reserved	For future use	3
70	GND	Transmitter Ground (Common with Receiver Ground)	1
71	Tx7 +	Transmitter Non -Inverted Data Input	
72	Tx7 -	Transmitter Inverted Data Output	
73	GND	Transmitter Ground (Common with Receiver Ground)	1
74	Tx5 +	Transmitter Non -Inverted Data Input	
75	Tx5 -	Transmitter Inverted Data Output	
76	GND	Transmitter Ground (Common with Receiver Ground)	1

Notes:

1. QSFP-DD uses common ground (GND) for all signals and supply (power). All are common within the QSFP-DD module and all module voltages are referenced to this potential unless otherwise noted. Connect these directly to the host board signal-common ground plane.
2. VccRx, VccRx1, Vcc1, Vcc2, VccTx and VccTx1 shall be applied concurrently. Requirements defined for the host side of the Host Card Edge Connector are listed in the table. VccRx, VccRx1, Vcc1, Vcc2, VccTx and VccTx1 may be internally connected within the module in any combination. The connector Vcc pins are each rated for a maximum current of 1000 mA.
3. All Vendor Specific, Reserved and No Connect pins may be terminated with 50  $\Omega$  to ground on the host. Pad 65 (No Connect) shall be left unconnected within the module. Vendor specific and Reserved pads shall have an impedance to GND that is greater than 10 k $\Omega$  and less than 100 pF.
4. Plug Sequence specifies the mating sequence of the host connector and module.

## Pin Assignment and Description

38	GND			GND	76
37	TX1n			TX2n	75
36	TX1p			TX2p	74
35	GND			GND	73
34	TX3n			TX4n	72
33	TX3p			TX4p	71
32	GND			GND	70
31	LPMode			ModSelL	69
30	Vcc1			ResetL	68
29	VccTx			VccRx	67
28	IntL			SCL	66
27	ModPrsL			SDA	65
26	GND			GND	64
25	RX4p			RX3p	63
24	RX4n			RX3n	62
23	GND			GND	61
22	RX2p			RX1p	60
21	RX2n			RX1n	59
20	GND			GND	58

Card Edge

Top Side Viewed from Top

38	GND			GND	1
37	TX1n			TX2n	2
36	TX1p			TX2p	3
35	GND			GND	4
34	TX3n			TX4n	5
33	TX3p			TX4p	6
32	GND			GND	7
31	LPMode			ModSelL	8
30	Vcc1			ResetL	9
29	VccTx			VccRx	10
28	IntL			SCL	11
27	ModPrsL			SDA	12
26	GND			GND	13
25	RX4p			RX3p	14
24	RX4n			RX3n	15
23	GND			GND	16
22	RX2p			RX1p	17
21	RX2n			RX1n	18
20	GND			GND	19

Card Edge

Bottom Side Viewed from Bottom

## Absolute Maximum Ratings

Parameter	Symbol	Min	Max	Units	Notes
Storage Temperature	Ts	-40	85	°C	
Power Supply Voltage	Vcc	-0.5	4.0	V	
Relative Humidity (non-condensation)	RH	15	85	%	

Notes:

Exceeding any of these values may be harmful for the device

## Recommended Operating Conditions

Parameter	Symbol	Min	Typical	Max	Units
Operating Case Temperature	Tc	0	25	70	°C
Supply Voltage	Vcc	3.135	3.3	3.465	V
Data Rate each Lane	-	-	106.25	-	Gbit/s
Data Rate Accuracy	-	-100	-	100	ppm
Link Distance	-	-	-	2000	m

## Transceiver Electrical Characteristics

Parameter	Min	Typical	Max	Units	Notes
Power Dissipation	-	-	8.0	W	-
Supply Current	-	-	2.60	A	-
Transmitter (each lane)					
Differential pk-pk Input Voltage Tolerance	900	-	-	mVpp	1
Differential Termination Mismatch	-	-	10	%	-
Common Mode Voltage	-350	-	2850	mV	2
Module Stressed Input Test	See IEEE 802.3bs 120E.3.4.1				3
Receiver (each lane)					
Differential pk-pk Input Voltage Tolerance	-	-	900	mVpp	-
Differential Termination Mismatch	-	-	10	%	-
Common Mode Voltage	-350	-	2850	mV	3
Module Stressed Input Test	See OIF-CEI-56G-VSR-PAM4 Section 16.3.10.3				

Notes:

1. With the exception to IEEE 802.3bs 120E.3.1.2 that the pattern is PRBS31Q or scrambled idle.
2. DC common mode voltage generated by the host. Specification includes effects of ground offset voltage.
3. Meets BER specified in IEEE 802.3bs 120E.1.1.

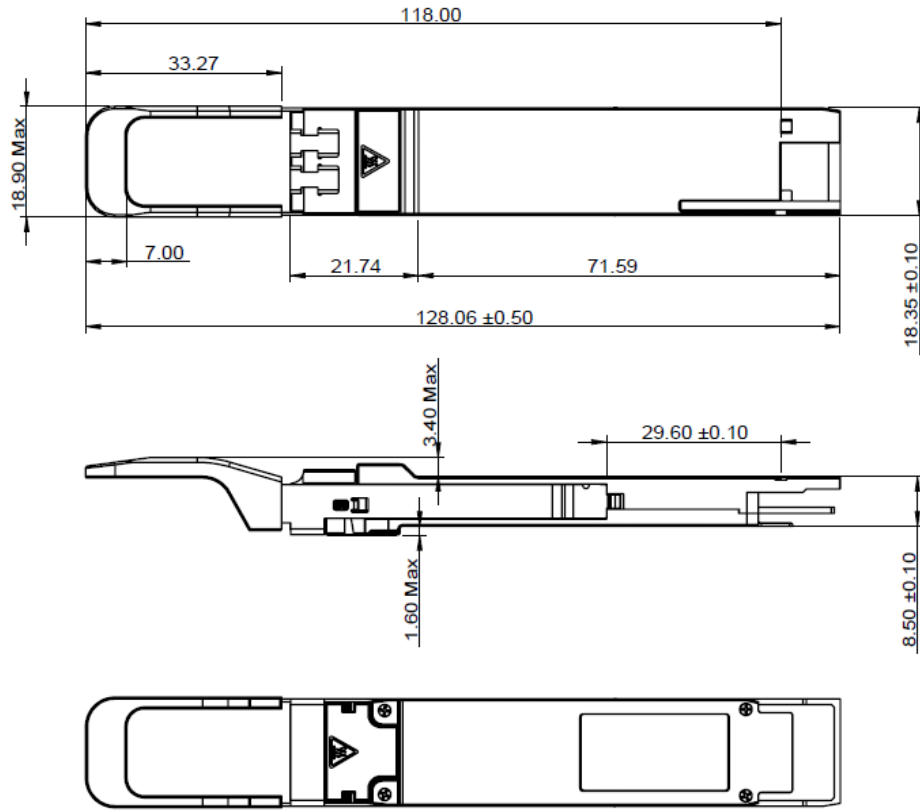
# Transceiver Optical Characteristics

Parameter	Min	Typical	Max	Units	Notes	
<b>Transmitter</b>						
Average Launch Power each Lane	-3.2	-	4.4	dBm	1	
Total Average Launch Power	-	-	10.4	dBm	-	
Outer Optical Modulation Amplitude, each lane	-	-	3.7	dBm	2	
Difference in Launch Power between any two Lanes (OMA outer)	-	-	3.9	dB	2	
Launched Outer OMA minus TDECQ, each Lane	-1.6	-	-	dBm	3	
Center Wavelength Range	L1	1264.50	1271.00	1277.50	nm	-
	L2	1284.50	1291.00	1297.50	nm	-
	L3	1304.50	1311.00	1317.50	nm	-
	L4	1324.50	1331.00	1337.50	nm	-
Extinction Ratio each Lane	3.5	-	-	dB	-	
Transmitter and Dispersion Eye Closure (TDECQ), each Lane	-	-	3.4	dB	-	
<b>Receiver</b>						
Center Wavelength Range	L1	1264.50	1271.00	1277.50	nm	-
	L2	1284.50	1291.00	1297.50	nm	-
	L3	1304.50	1311.00	1317.50	nm	-
	L4	1324.50	1331.00	1337.50	nm	-
Damage Threshold, each Lane	5.4	-	-	dBm	-	
Average Receive Power each Lane	-7.2	-	4.4	dBm	4	
Receive Power (OMA) each Lane	-	-	3.7	dBm	-	
Receiver Sensitivity (OMA) each Lane	-	-	-4.6	dB	5	
LOS De-Assert	-	-	-10	dBm	-	
LOS Assert	-16	-	-	dBm	-	
LOS Hysteresis	0.5	-	-	dB	-	

**Notes:**

1. Average launch power, each lane(min) is informative and not the principal indicator of signal strength. A transmitter with launch power below this value cannot be compliant; however, a value above this does not ensure compliance
2. Even if the TDECQ < 1.4dB for an extinction ratio of  $\geq 3.4$ dB or TDECQ < 1.4dB for an extinction ratio of < 3.4dB the minimum OMA outer must exceed the specified minimum value
3. Extinction ratio  $\geq 3.5$ dB
4. Average receive power, each lane (min) is informative and not the principal indicator of signal strength. A received power below this value cannot be compliant; however, a value above this does not ensure compliance
5. Measured with conformance test signal with BER  $\leq 2.4 \times 10^{-4}$

# Mechanical specifications



Unit : mm

## Revision history

Revision	Date	Author	Description
V1.1	12-09-2022	JGN	Initial Document
V1.2	11-11-2024	ML	Minor adjustments

Note : Nexgen A/S reserves the right to change this document without notice.